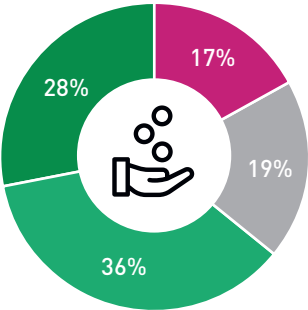
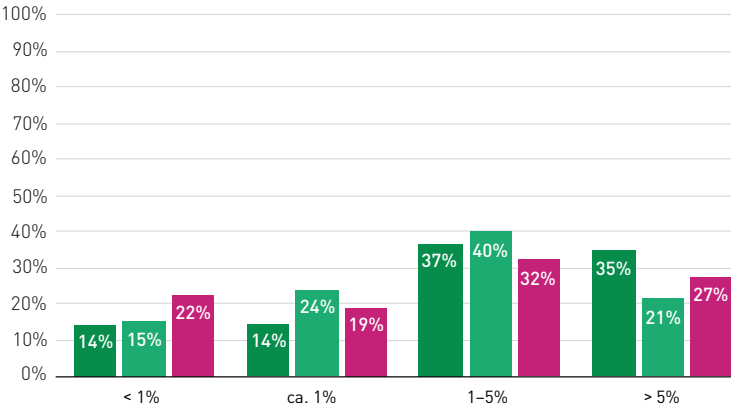


# Investments in innovation and digitalisation as percentage of annual turnover

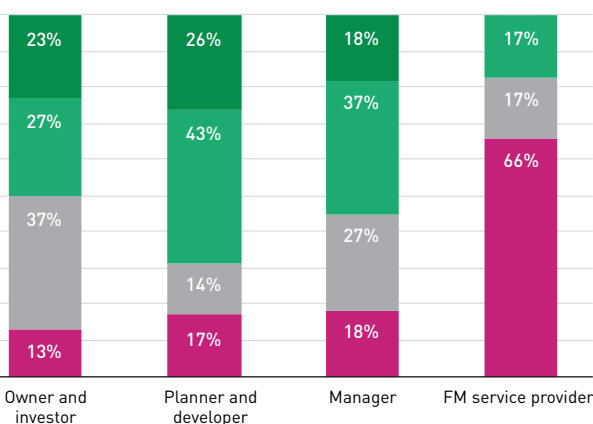
Investments across all companies



Investments according to company size



Investments according to role



**Investment Legend:** ■ < 1% ■ ca. 1% ■ 1-5% ■ > 5%  
**Company Size Legend:** ■ Small (up to 49 employees) ■ Medium (50 – 249 employees) ■ Large (more than 250 employees)  
**Role Legend:** ■ < 1% ■ ca. 1% ■ 1-5% ■ > 5%